

**Date Reported:** Wednesday, December 13, 2017

**Cell Line Gender:** Female

**Cell Line:** MA011S-6

**Reason for Testing:** Routine Characterization

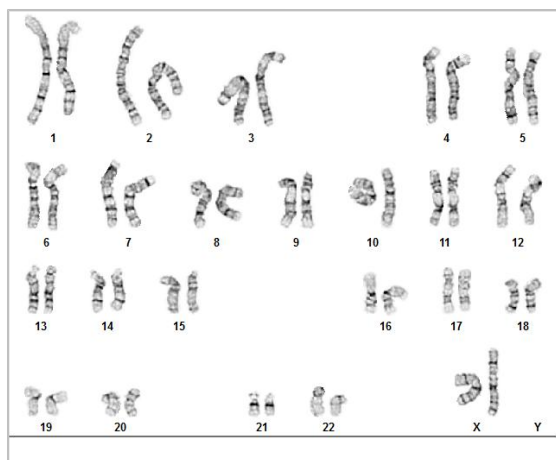
**Passage#:** 23

**Date of Sample:** 12/6/2017

**Investigator:** Arianne Thomas, Boston University

**Specimen:** Human IPS

**Results:** 46,XX



**Cell:** 8

**Slide:** G01

**Slide Type:** Karyotype

**Total Counted:** 20

**Total Analyzed:** 8

**Total Karyogrammed:** 4

**Band Resolution:** 475 - 525

## Interpretation:

**This is a normal karyotype. No clonal abnormalities were detected at the stated band level of resolution.**

**Completed by:** Erik McIntire, CG(ASCP)

**Reviewed and Interpreted by:** Karen Dyer Montgomery, PhD, FACMG

**A signed copy of this report is available upon request.**

**Date:** \_\_\_\_\_ **Sent By:** \_\_\_\_\_ **Sent To:** \_\_\_\_\_ **QC Review By:** \_\_\_\_\_

**Limitations:** This assay allows for microscopic visualization of numerical and structural chromosome abnormalities. The size of structural abnormality that can be detected is >3-10Mb, dependent upon the G-band resolution obtained from this specimen. For the purposes of this report, band level is defined as the number of G-bands per haploid genome. It is documented here as "band level", i.e., the range of bands determined from the four karyograms in this assay. Detection of heterogeneity of clonal cell populations in this specimen (i.e., mosaicism) is limited by the number of metaphase cells examined, documented here as "# of cells counted".

This assay was conducted solely for listed investigator/institution. The results may not be relied upon by any other party without the prior written consent of the Director of the WiCell Cytogenetics Laboratory. The results of this assay are for research use only. If the results of this assay are to be used for any other purpose, contact the Director of the WiCell Cytogenetics Laboratory.

Unless otherwise mutually agreed in writing, the services provided to you hereunder by WiCell Research Institute, Inc. ("WiCell") are governed solely by WiCell's Terms and Conditions of Service, found at [www.wicell.org/privacyandterms](http://www.wicell.org/privacyandterms). Any terms you may attach to a purchase order or other document that are inconsistent, add to, or conflict with WiCell's Terms and Conditions of Service are null and void and of no legal force or effect.